



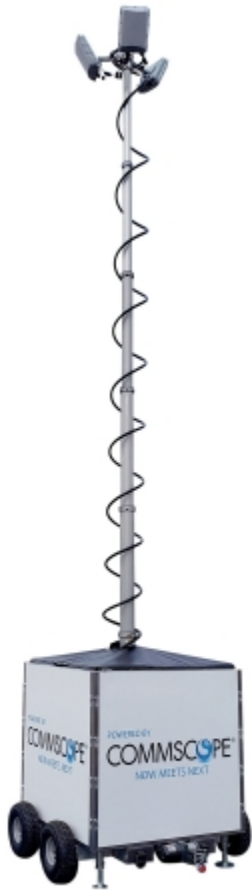
## CommScope Introduces Wireless Rapid Deployment Unit for On-Demand Wireless Connectivity

July 7, 2020

*Powerful high-speed solution for immediate wireless connectivity anywhere*

HICKORY, N.C.--(BUSINESS WIRE)--Jul. 7, 2020-- CommScope today announced the Wireless [Rapid Deployment Unit \(RDU\)](#) for quickly delivering a safe, reliable, and high-speed Wi-Fi, or other wireless network.

This press release features multimedia. View the full release here: <https://www.businesswire.com/news/home/20200707005198/en/>



CommScope Rapid Deployment Unit  
(Photo: Business Wire)

[www.commscope.com](http://www.commscope.com).

Follow us on [Twitter](#) and [LinkedIn](#) and like us on [Facebook](#).

Sign up for our [press releases](#) and [blog posts](#).

© 2020 CommScope, Inc. All rights reserved. CommScope, ARRIS and RUCKUS are trademarks of CommScope, Inc. and/or its affiliates. Wi-Fi is a trademark of the Wi-Fi Alliance. All other trademarks are the property of their respective owners.

View source version on [businesswire.com](https://www.businesswire.com/news/home/20200707005198/en/): <https://www.businesswire.com/news/home/20200707005198/en/>

### News Media Contact:

Kalia Farrell, CommScope  
+1-215-323-1059 or [publicrelations@commscope.com](mailto:publicrelations@commscope.com)

The RDU was developed by the [CommScope Professional Services Team](#) in response to a growing demand for a mobile Wi-Fi solution providing ad hoc connectivity in a range of environments—including concerts, parades, pop-up medical facilities, emergency response centers, and remote learning and access sites.

The solution uses [RUCKUS T610](#) outdoor access points and a telescopic mast to deliver cost-effective, carrier-grade Wi-Fi in a small, forklift-ready 4'x4' footprint. The RDU is equipped with wheels so that, once delivered to a site, it can be easily towed or maneuvered into position. The mast can readily accept other devices to support LTE or IoT applications. The RDU is powered by an on-board generator and can use a variety of backhaul methods including fiber, ethernet, LTE or DOCSIS. It is in full production, with CommScope factories and partners ready to meet demand in the United States, Canada and U.S. territories in the Caribbean. The RDU will ship to additional regions in the near future.

"We've successfully deployed customized versions of the RDU, and now we're excited to bring its capabilities to a broader range of customers," said Chirag Trivedi, vice president, Global Professional Services of CommScope's Broadband Networks business. "Our Professional Services team designed this best-of-breed solution, which leverages CommScope's technology and scale to broaden the frontiers of high-speed connectivity."

CommScope's Professional Services team is available to ship, preconfigure, customize, deploy, connect, and centrally host the CommScope RDU to deliver on-demand wireless services.

Available services include:

- **White Glove Delivery:** Shipping, unpacking, setup, placement, removal of packing materials
- **Service Activation:** Network connection, provisioning and activation, demo and "over-the-shoulder" training
- **Onsite Support:** Onsite monitoring and maintenance for the duration of the deployment
- **Managed Services:** User onboarding, back-office system integration, 24/7 monitoring and maintenance, end user and/or operator tech support

For more information on the CommScope RDU, visit the product [website](#) and videos ([Emergency Response](#) and [Special Events](#)).

### About CommScope

CommScope (NASDAQ: COMM) is pushing the boundaries of technology to create the world's most advanced wired and wireless networks. Our global team of employees, innovators and technologists empower customers to anticipate what's next and invent what's possible. Discover more at

**Financial Contact:**

Kevin Powers, CommScope  
+1-828-323-4970

Source: CommScope